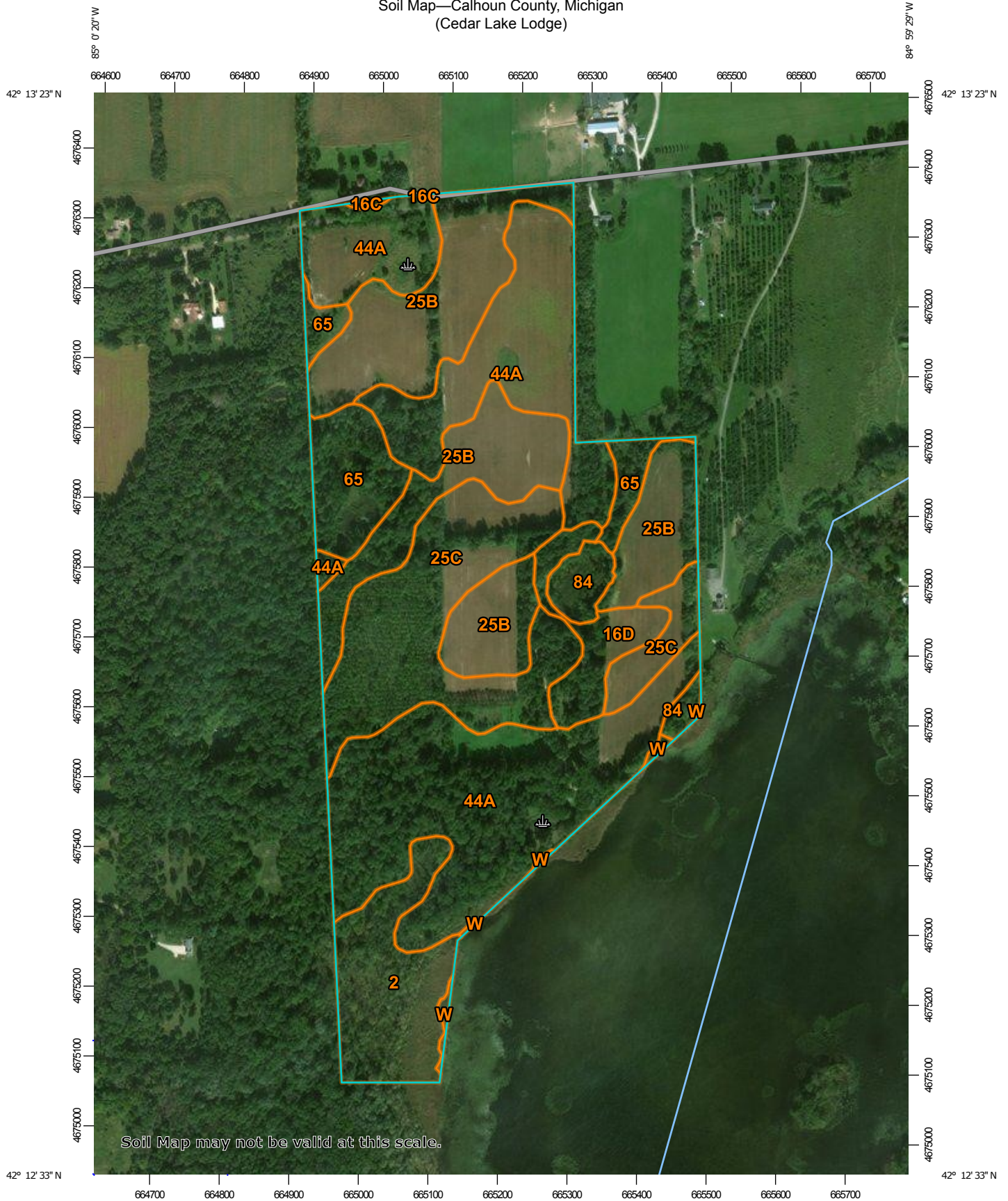
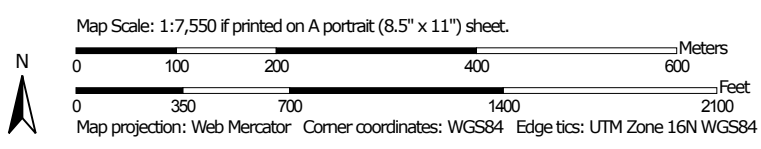








Soil Map—Calhoun County, Michigan  
(Cedar Lake Lodge)



Soil Map may not be valid at this scale.



## MAP LEGEND

	Area of Interest (AOI)		Spoil Area
	Area of Interest (AOI)		Stony Spot
<b>Soils</b>			Very Stony Spot
	Soil Map Unit Polygons		Wet Spot
	Soil Map Unit Lines		Other
	Soil Map Unit Points		Special Line Features
<b>Special Point Features</b>		<b>Water Features</b>	
	Blowout		Streams and Canals
	Borrow Pit	<b>Transportation</b>	
	Clay Spot		Rails
	Closed Depression		Interstate Highways
	Gravel Pit		US Routes
	Gravelly Spot		Major Roads
	Landfill		Local Roads
	Lava Flow	<b>Background</b>	
	Marsh or swamp		Aerial Photography
	Mine or Quarry		
	Miscellaneous Water		
	Perennial Water		
	Rock Outcrop		
	Saline Spot		
	Sandy Spot		
	Severely Eroded Spot		
	Sinkhole		
	Slide or Slip		
	Sodic Spot		

## MAP INFORMATION

The soil surveys that comprise your AOI were mapped at 1:15,800.

Warning: Soil Map may not be valid at this scale.

Enlargement of maps beyond the scale of mapping can cause misunderstanding of the detail of mapping and accuracy of soil line placement. The maps do not show the small areas of contrasting soils that could have been shown at a more detailed scale.

Please rely on the bar scale on each map sheet for map measurements.

Source of Map: Natural Resources Conservation Service

Web Soil Survey URL:

Coordinate System: Web Mercator (EPSG:3857)

Maps from the Web Soil Survey are based on the Web Mercator projection, which preserves direction and shape but distorts distance and area. A projection that preserves area, such as the Albers equal-area conic projection, should be used if more accurate calculations of distance or area are required.

This product is generated from the USDA-NRCS certified data as of the version date(s) listed below.

Soil Survey Area: Calhoun County, Michigan  
Survey Area Data: Version 15, Oct 5, 2017

Soil map units are labeled (as space allows) for map scales 1:50,000 or larger.

Date(s) aerial images were photographed: Jul 1, 2011—Mar 10, 2017

The orthophoto or other base map on which the soil lines were compiled and digitized probably differs from the background imagery displayed on these maps. As a result, some minor shifting of map unit boundaries may be evident.

## Map Unit Legend

Map Unit Symbol	Map Unit Name	Acres in AOI	Percent of AOI
2	Houghton muck, undrained, 0 to 1 percent slopes	10.0	8.1%
16C	Oshtemo sandy loam, 6 to 12 percent slopes	0.1	0.1%
16D	Oshtemo sandy loam, 12 to 18 percent slopes	4.6	3.7%
25B	Kalamazoo loam, 2 to 6 percent slopes	30.2	24.4%
25C	Kalamazoo loam, 6 to 12 percent slopes	21.2	17.1%
44A	Matherton loam, 0 to 3 percent slopes	46.7	37.6%
65	Sebewa loam, 0 to 2 percent slopes	8.1	6.5%
84	Histosols and Aquents, ponded	2.6	2.1%
W	Water	0.5	0.4%
<b>Totals for Area of Interest</b>		<b>124.1</b>	<b>100.0%</b>